



Support Network at Penn National

Neighbors helping neighbors live actively, safely and comfortably at home

www.snapn.org

NEWSLETTER

February/March 2011

Mark your calendars and plan to join us for these special events.

Wednesday—March 2

Non-Member Coffee and Pastries at PN Clubhouse
10 a.m. — Noon

Wednesday—March 17

Presentation—Preparing and Updating Legal Documents at Grove Family Library
3 p.m. — 5 p.m.

Saturday— April 9

Casino Night at Mont Alto Fire House
5 p.m. — 9 p.m.

Saturday—April 30

SNaP 2nd Annual Community Pancake Breakfast at Mont Alto Fire Hall
8 a.m. — 11 a.m.

May 4—Annual Membership Meeting

3 p.m. — 5 p.m.

Visit us on the web at www.snapn.org for more information about services and activities.

Membership Drive—January 2011

Kick-Off Reception

We really did not know what to expect from the first month of our Membership Drive, but everyone on the Membership Committee was pleased with the results. The January 19 event was a success thanks to everyone who attended and sponsored new members. A special thanks goes to Ray Ficca and the many local businesses that provided door prizes and gift certificates that SNaP awarded to those who joined at the kick-off.

The *SNaP Board of Trustees and Members* would like to welcome the following new members.

- | | |
|------------------------------------|--|
| <i>Stephen Melnikoff</i> | <i>Walter and Judy Wilson</i> |
| <i>Edward and Eun Fisher</i> | <i>Jerry and Kathleen Gartner, Jr.</i> |
| <i>James and Kathleen White</i> | <i>J. Roger and Jeanne Strode</i> |
| <i>Frederick and Joanne Firman</i> | <i>Paul and Virginia York</i> |
| <i>Bernard and Edna Harris</i> | <i>John and Nancy Gaal</i> |
| <i>Josef and Lidia Messmer</i> | <i>JoRetha Scouten</i> |
| <i>Henry and Lynn Powers</i> | <i>William and Phyllis Shafer</i> |
| <i>Elbert Isham</i> | <i>Edward and Dorothy Braun</i> |

The Drive Continues

The Membership Drive continues through March 31. Anyone interested in joining SNaP or learning more about the program should call any Trustee or the Executive Director at 352-2612.

Coffee and Pastries

On March 2, at 10 a.m., SNaP will host a morning of coffee and pastries at the Clubhouse for those who signed up to attend our kickoff event but could not make it. Expect an email invitation or a personal call soon.



Save the Dates ✓



March 17— Legal Documents Preparing and Updating Important Documents

3 p.m.—5 p.m.

Grove Family Library

Presenter: Clint Barkdoll, Attorney

Everyone is welcome. Non-SNaP members \$2 per person

RSVP by March 14 to Donna Crissman at **352-2612**

Can you answer these questions?

- What is a living will? I'm 30, do I need a living will?
- Who can execute a living will?
- Do I need a power of attorney?
- Do I have a health care directive?
- What's in my safe deposit box?
- Do I have a letter of instruction?
- Where are my important documents?

Join us on March 17
to find out if your
answers are correct.



April 30— 2nd Annual Community Pancake Breakfast

It's time to start thinking about a "Celebration of Spring". The 2nd Annual Community Pancake Breakfast is coming April 30 from 8 a.m. to 11 a.m. Our venue has moved to the Mont Alto Fire Hall, so the *community celebration* will be even better this year. The menu includes pancakes, sausage links, juice, coffee and tea. We plan to repeat our friendly neighborhood atmosphere with plenty of time for meeting new neighbors and talking to your friends.

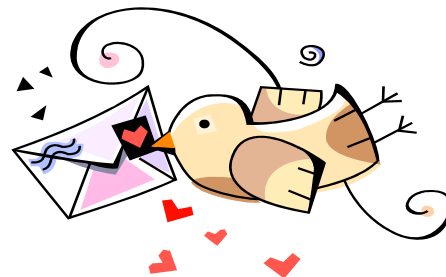
Ticket sales will begin in March and are \$5 dollars per adult and free for children 8 and under. Contact any SNaP member or call Don Anliker at 352-7621 for tickets.

The breakfast is open to everyone, so invite your family and friends both near and far.

Hope to see you there!!!

Greetings

Sally McEwen has graciously offered to send greeting cards to members who are a bit under the weather. If you know of a member who is ill, recovering from surgery, or in need of a bit of sunshine, please leave a message with Sally at 352-3242.



**Do you have a talent or skill you want to share? Why not become a SNaP Volunteer.
Call 352-2612 today or visit us at www.snapn.org.**

Super Bowl Party

The SNaPbacks gathered at the home of Dee Sweitzer for this year's Super Bowl party. There was plenty of football talk, good food, drinks, and desserts enjoyed while watching the game.



Home Safety Presentation

The home safety presentation, held on February 9, was well attended by SNaP members and other Penn National residents. Home safety was the first in a series of important topics to be presented this year.

The presenter was Susan Pape, a resident of Penn National since 1996, a Captain in the U.S. Navy, and a nurse, as well as a SNaP member.

A panel of member/volunteers were available to answer home maintenance and electronics questions. A representative from Lowe's displayed home safety products and was available for questions as well.

Thanks for joining us.



Joining SNaP is easy

With the cost of everything going up, you can feel good about getting the most for your money when you join SNaP. Our membership fees have remained the same since we opened our doors in May 2008.

Call **352-2612** or go to our website at www.snapn.org to fill out an application.

General Membership
\$250
Single Resident Membership
\$200
Supported Membership
\$150

Renewing is easy

When your membership renewal is due:

- the Executive Director will call you one month in advance,
- you then deliver or mail your check (payable to SNaP) to 3872 Alfalfa Lane, Fayetteville, PA 17222,
- the Executive Director will mail your renewal/tax letter and your new membership cards for the current year.

Friendly Phone Call Program



Beginning in March, SNaP will launch a *Friendly Phone Call Program* for members who wish to receive a friendly call or an inquiry whether they are OK. Each day, or at a requested frequency, a member/volunteer will make the call at a mutually agreeable time to share a brief conversation. If the call is not answered, a follow-up call will be made. If necessary, the volunteer will make a home visit. These calls can be made after an illness, surgery, or just to have a brief chat. Calls will only be made at the request of the member.

To be placed on our call list, please call 352-2612.

Fire, Ambulance, and Advanced Life Support Services

Guilford Township Supervisors have designated the Mont Alto Volunteer Fire Company and Ambulance Squad to service Penn National (PN) in an emergency.

The Fayetteville Fire Department and Ambulance Squad are the second due emergency service for PN.

Advanced Life Support Service (ALS) is different from Fire or Ambulance Service. Fayetteville is the first due ALS service for PN.

Should the Mont Alto Fire Company or Ambulance Squad require mutual aid from Fayetteville, or should Fayetteville ALS service require mutual aid from Waynesboro ALS, you would be covered in all cases because each honors the other Department's memberships.

Please support the Mont Alto Volunteer Fire Company and Ambulance Squad and the Fayetteville Fire Company and Advanced Life Support Service yearly.

The Mont Alto Ambulance Association and Fayetteville Fire and Rescue request that you:

- Place green reflective address signs near the end of your driveway to make finding your home easier in the event of an emergency. Address signs are available at the Mont Alto Fire Hall for \$10.
- Keep your SNaP Medical Emergency Information Card updated and in view for medical personnel.

Benefits to Listing With White Rock Real Estate

White Rock Real Estate

- specializes in the Penn National Community and, as a SNaP affiliate, will list member homes for a 4% commission;
- advertises regionally year round and communicates through the PN web site and through the Multi List service, reaching the maximum number of potential prospects;
- uses mail and electronic data base marketing to keep customers apprised of new sales and listings within the community; and
- works 7 days a week to provide better service than local agencies.

Resales are a valuable part of our product mix and White Rock Real Estate needs resales to create interest and activity in Penn National. Today, many people want to purchase an existing home rather than build. For information, please contact John or Diane.

John A. Miner Broker 717-352-3046

Diane Boock: dianeboock@pennhomes.com



SUPPORT NETWORK at PENN NATIONAL

3872 Alfalfa Lane, Fayetteville, PA 17222 (717) 352-2612

MEMBERSHIP AGREEMENT

Support Network at Penn National (SNaP) is a non-profit 501(c)(3) corporation, founded by Penn National residents, dedicated to helping its members live life to the fullest as they age with grace in their own homes. To that end, SNaP has arranged to offer a wide range of Services, primarily through third-party providers, that can be acquired through a single telephone call.

Annual Membership Fees:	General Membership	\$250.00
	Single Resident Membership	\$200.00
	Supported Membership	\$150.00

The Supported Membership Program offers residents of moderate means full participation at a reduced rate. Determination of eligibility will be based on the recommendation of the Executive Director with approval by the Board of Trustees.

Although SNaP desires to ensure the highest possible member satisfaction with all of the activities and services provided, SNaP will not under any circumstance assume any direct or indirect responsibility or liability in connection with services contracted for by members with third party providers recommended by SNaP.

AGREEMENT:

In order for SNaP to monitor its members' needs and levels of satisfaction, **I authorize third-party providers to share non-medical data with SNaP about the services I use.**

As a member of the Support Network at Penn National:

- I hereby release and discharge Support Network at Penn National from all responsibility or liability for services rendered by any third-party providers.**
- I agree to hold Support Network at Penn National harmless from and against any cost, expenses or damages (including without limitation, reasonable attorney's fees) arising in connection with any and all claims brought by or through me, including but not limited to claims brought by my insurance carrier. In the event any claim is brought by or through me, same shall be submitted to binding arbitration, pursuant to rules and procedures outlined by the American Arbitration Association.**

I have read the above carefully, and I am pleased to become a member of the Support Network at Penn National under the terms and conditions described.

Print Name

Print Name

Signature of Member

Signature of Member

Date

Date

Street Address

Telephone Number

Email Address

Date of Birth

Date of Birth

Office use only

Membership Fee _____

Date Paid _____

Approved _____

Support Network at Penn National
3872 Alfalfa Lane
Fayetteville, Pa 17222

Executive Director, Donna Crissman
Phone: 717-352-2612
email: director@snapn.org
website: www.snapn.org



www.snapn.org

SNAP Board of Trustees

Donald Weber, President
Marilyn Ross, Secretary
Howard Lutz, Treasurer
Donald David
Roland Foster
Al Gibson
Jean Morton
Rosina Saitta
Robert Schaefer, Jr.
Dee Sweitzer

Discount Electric Rates



White Rock, Inc. has negotiated discounted rates through Chamber Choice and energy consultant OnDemand, which First Energy Solutions will extend to our employees and Penn National Residents. By enrolling now, Penn National residents can lock in a rate of 6.59 cents/kwh for a three-year term. This is a discount of 7.6 percent vs. current Allegheny rates (which are expected to increase in the future).

For more information and to enroll in the program, go to fes.com/chamberchoice or call 1-855-473-7433. Flyers are available in the Clubhouse.

Submitted by White Rock, Inc.



Printing of this newsletter was made possible by a contribution from F&M Trust.